

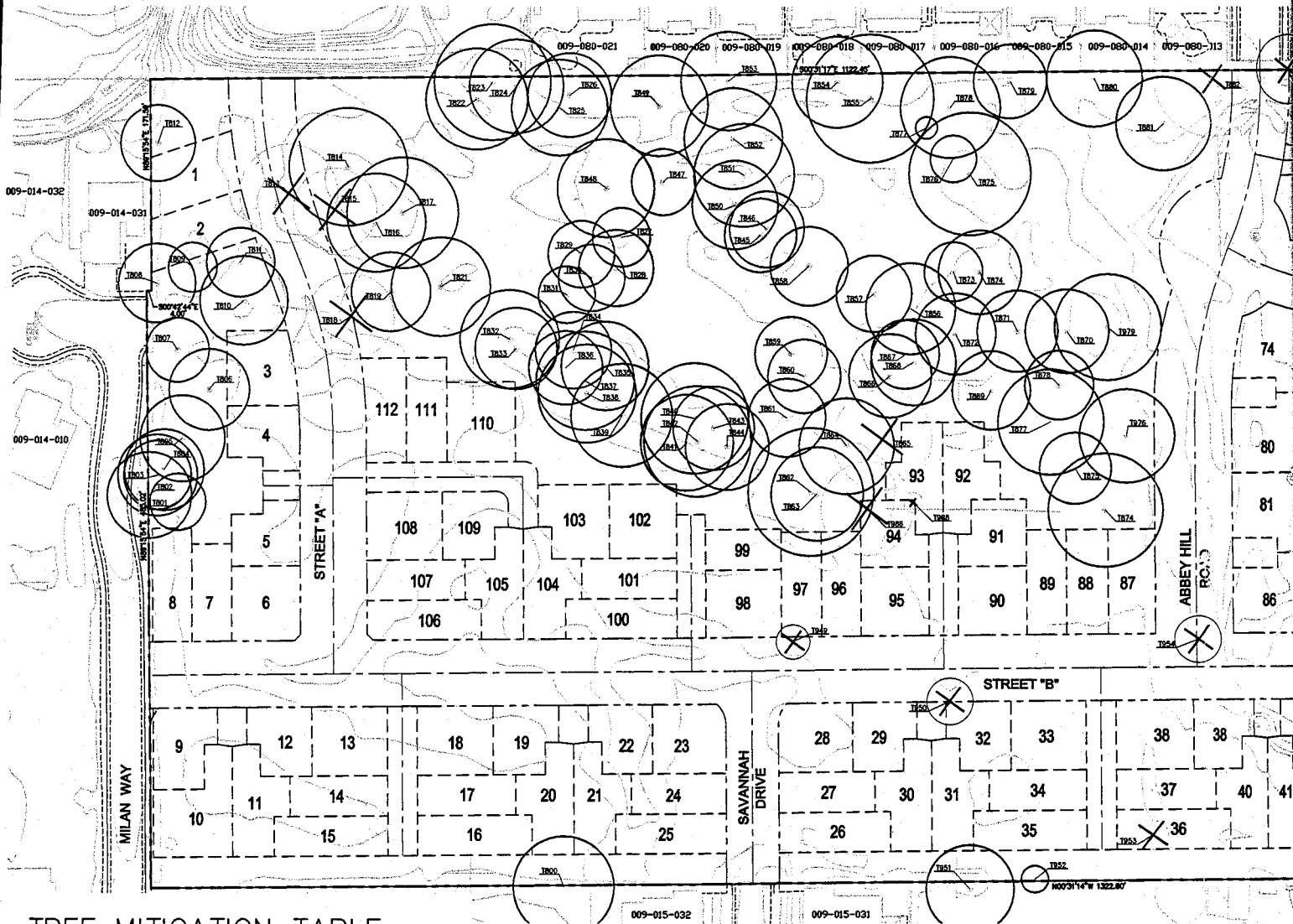
# TREE EXHIBIT

## WHISPERING OAKS

### CITY OF LINCOLN CALIFORNIA

MAY 2006, 112 SINGLE FAMILY

A PORTION OF THE NORTHWEST 1/4 SECTION 16, T 12N, R 6E, M.D.B. & M.  
CITY OF LINCOLN, COUNTY OF PLACER, CALIFORNIA



**TREE MITIGATION TABLE**

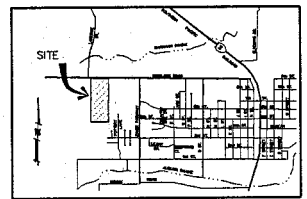
| TAG NUMBER | SPECIES  | TRUNK DIA. (INCHES) | DRIPLINE (FEET) | RECOMMENDED REMOVAL | PRECAUTIONARY TREE | REMOVE |
|------------|----------|---------------------|-----------------|---------------------|--------------------|--------|
| 800        | BLUE OAK | 20                  | 23              |                     |                    | NO     |
| 801        | BLUE OAK | 29                  | 35              |                     |                    | NO     |
| 802        | BLUE OAK | 15                  | 26              |                     |                    | NO     |
| 803        | BLUE OAK | 22                  | 33              | X                   |                    | NO     |
| 804        | BLUE OAK | 31                  | 35              |                     | X                  | NO     |
| 805        | BLUE OAK | 26                  | 33              |                     |                    | NO     |
| 806        | BLUE OAK | 21                  | 26              | X                   |                    | NO     |
| 807        | BLUE OAK | 31                  | 35              |                     | X                  | NO     |
| 808        | BLUE OAK | 22                  | 29              |                     |                    | NO     |
| 809        | BLUE OAK | 30                  | 36              | X                   |                    | NO     |
| 810        | BLUE OAK | 21                  | 26              |                     |                    | NO     |
| 811        | BLUE OAK | 46                  | 51              |                     | X                  | NO     |
| 812        | BLUE OAK | 37                  | 40              |                     | X                  | YES    |
| 813        | BLUE OAK | 32                  | 48              |                     | X                  | NO     |
| 814        | BLUE OAK | 25                  | 24              |                     | X                  | YES    |
| 815        | BLUE OAK | 29                  | 40              |                     | X                  | NO     |
| 816        | BLUE OAK | 25                  | 45              |                     |                    | NO     |
| 817        | BLUE OAK | 28                  | 35              |                     | X                  | YES    |
| 818        | BLUE OAK | 25                  | 32              |                     |                    | NO     |
| 819        | BLUE OAK | 25                  | 32              |                     |                    | NO     |
| 820        | NOT USED |                     |                 |                     |                    |        |
| 821        | BLUE OAK | 26                  | 40              | X                   |                    | NO     |
| 822        | BLUE OAK | 27                  | 41              |                     | X                  | NO     |
| 823        | BLUE OAK | 29                  | 47              |                     | X                  | NO     |
| 824        | BLUE OAK | 31                  | 38              | X                   |                    | NO     |
| 825        | BLUE OAK | 32                  | 39              |                     |                    | NO     |
| 826        | BLUE OAK | 25                  | 34              |                     |                    | NO     |
| 827        | BLUE OAK | 15                  | 24              |                     |                    | NO     |
| 828        | BLUE OAK | 18                  | 31              |                     |                    | NO     |
| 829        | BLUE OAK | 24                  | 27              |                     |                    | NO     |
| 830        | BLUE OAK | 21                  | 27              |                     |                    | NO     |
| 831        | BLUE OAK | 16                  | 23              |                     | X                  | NO     |
| 832        | BLUE OAK | 24                  | 40              |                     | X                  | NO     |
| 833        | BLUE OAK | 25                  | 33              |                     | X                  | NO     |
| 834        | BLUE OAK | 22                  | 31              |                     |                    | NO     |
| 835        | BLUE OAK | 27                  | 36              |                     |                    | NO     |
| 836        | BLUE OAK | 29                  | 30              |                     |                    | NO     |
| 837        | BLUE OAK | 24                  | 40              |                     | X                  | NO     |
| 838        | BLUE OAK | 23                  | 40              |                     |                    | NO     |
| 839        | BLUE OAK | 36                  | 42              |                     | X                  | NO     |
| 840        | BLUE OAK | 27                  | 45              | X                   |                    | NO     |
| 841        | BLUE OAK | 22                  | 29              |                     |                    | NO     |
| 842        | BLUE OAK | 27                  | 45              |                     |                    | NO     |
| 843        | BLUE OAK | 22                  | 34              | X                   |                    | NO     |
| 844        | BLUE OAK | 24                  | 35              |                     |                    | NO     |
| 845        | BLUE OAK | 25                  | 30              |                     |                    | NO     |
| 846        | BLUE OAK | 21                  | 31              |                     |                    | NO     |
| 847        | BLUE OAK | 20                  | 27              |                     |                    | NO     |
| 848        | BLUE OAK | 22                  | 40              | X                   |                    | NO     |
| 849        | BLUE OAK | 37                  | 41              |                     | X                  | NO     |

| TAG NUMBER | SPECIES    | TRUNK DIA. (INCHES) | DRIPLINE (FEET) | RECOMMENDED REMOVAL | PRECAUTIONARY TREE | REMOVE |
|------------|------------|---------------------|-----------------|---------------------|--------------------|--------|
| 850        | BLUE OAK   | 21                  | 26              |                     | X                  | NO     |
| 851        | BLUE OAK   | 27                  | 42              |                     |                    | NO     |
| 852        | BLUE OAK   | 28                  | 41              | X                   |                    | NO     |
| 853        | BLUE OAK   | 39                  | 40              |                     | X                  | NO     |
| 854        | BLUE OAK   | 38                  | 37              |                     | X                  | NO     |
| 855        | BLUE OAK   | 43                  | 52              |                     | X                  | NO     |
| 856        | BLUE OAK   | 27                  | 37              | X                   |                    | NO     |
| 857        | BLUE OAK   | 25                  | 31              |                     |                    | NO     |
| 858        | BLUE OAK   | 29                  | 32              |                     | X                  | NO     |
| 859        | BLUE OAK   | 24                  | 30              |                     |                    | NO     |
| 860        | BLUE OAK   | 17                  | 30              | X                   |                    | NO     |
| 861        | BLUE OAK   | 21                  | 32              |                     |                    | NO     |
| 862        | BLUE OAK   | 24                  | 32              | X                   |                    | NO     |
| 863        | BLUE OAK   | 32                  | 38              | X                   |                    | NO     |
| 864        | BLUE OAK   | 24                  | 39              |                     |                    | NO     |
| 865        | BLUE OAK   | 32                  | 41              | X                   |                    | YES    |
| 866        | BLUE OAK   | 26                  | 34              |                     | X                  | NO     |
| 867        | BLUE OAK   | 18                  | 28              | X                   |                    | NO     |
| 868        | BLUE OAK   | 22                  | 35              |                     |                    | NO     |
| 869        | BLUE OAK   | 23                  | 32              |                     |                    | NO     |
| 870        | BLUE OAK   | 28                  | 34              |                     |                    | NO     |
| 871        | BLUE OAK   | 26                  | 33              |                     |                    | NO     |
| 872        | BLUE OAK   | 24                  | 33              |                     |                    | NO     |
| 873        | BLUE OAK   | 27                  | 34              |                     |                    | NO     |
| 874        | BLUE OAK   | 24                  | 34              |                     |                    | NO     |
| 875        | BLUE OAK   | 37                  | 50              |                     | X                  | NO     |
| 876        | BLUE OAK   | 18                  | 19              |                     |                    | NO     |
| 877        | BLUE OAK   | 6                   | 9               |                     |                    | NO     |
| 878        | BLUE OAK   | 24                  | 41              |                     | X                  | NO     |
| 879        | BLUE OAK   | 28                  | 36              | X                   |                    | NO     |
| 880        | BLUE OAK   | 43                  | 29              | X                   |                    | NO     |
| 881        | BLUE OAK   | 29                  | 38              |                     | X                  | NO     |
| 882        | BLUE OAK   | 43                  | 47              | X                   |                    | YES    |
| 883        | VALLEY OAK | 26                  | 29              |                     |                    | YES    |
| 884        | VALLEY OAK | 24                  | 29              |                     |                    | YES    |
| 885        | VALLEY OAK | 22                  | 23              |                     | X                  | YES    |
| 886        | VALLEY OAK | 27                  | 23              |                     |                    | YES    |
| 887        | VALLEY OAK | 41                  | 54              |                     | X                  | NO     |
| 888        | VALLEY OAK | 6                   | 12              |                     |                    | NO     |
| 889        | VALLEY OAK | 25                  | 21              |                     |                    | NO     |
| 890        | VALLEY OAK | 18                  | 22              |                     |                    | NO     |
| 891        | VALLEY OAK | 13                  | 18              |                     |                    | NO     |
| 892        | VALLEY OAK | 6                   | 6               | X                   |                    | NO     |
| 893        | VALLEY OAK | 12                  | 16              |                     |                    | NO     |
| 894        | VALLEY OAK | 17                  | 22              |                     |                    | NO     |
| 895        | VALLEY OAK | 16                  | 22              |                     |                    | NO     |
| 896        | VALLEY OAK | 7                   | 16              |                     |                    | NO     |
| 897        | VALLEY OAK | 9                   | 15              |                     |                    | NO     |
| 898        | VALLEY OAK | 12                  | 18              |                     | X                  | NO     |
| 899        | VALLEY OAK | 22                  | 22              |                     | X                  | NO     |

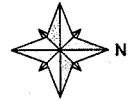
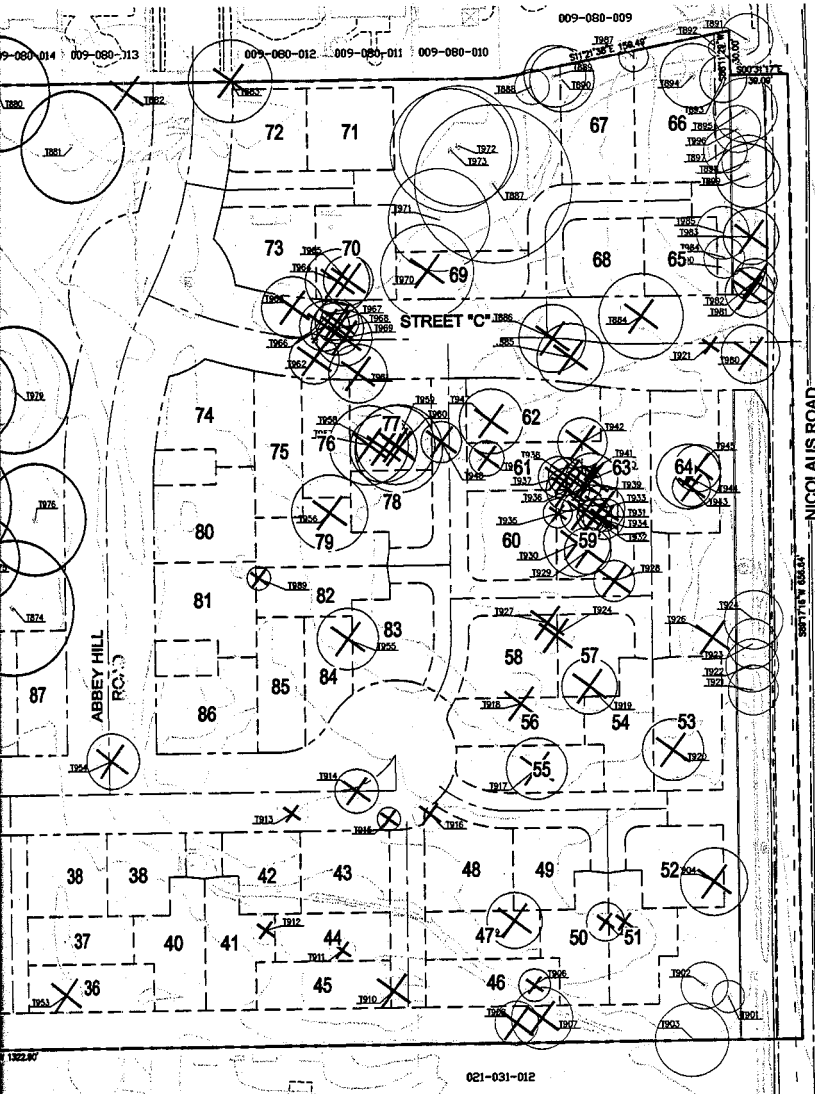
| TAG NUMBER | SPECIES                 | TRUNK DIA. (INCHES) | DRIPLINE (FEET) | RECOMMENDED REMOVAL | PRECAUTIONARY TREE | REMOVE |
|------------|-------------------------|---------------------|-----------------|---------------------|--------------------|--------|
| 900        | VALLEY OAK              | 14                  | 20              |                     |                    | NO     |
| 901        | VALLEY OAK              | 10                  | 17              |                     |                    | NO     |
| 902        | VALLEY OAK              | 12                  | 16              |                     |                    | NO     |
| 903        | VALLEY OAK              | 25                  | 25              |                     |                    | NO     |
| 904        | VALLEY OAK              | 27                  | 29              |                     |                    | NO     |
| 905        | VALLEY OAK              | 12                  | 13              |                     |                    | NO     |
| 906        | VALLEY OAK              | 8                   | 11              |                     |                    | NO     |
| 907        | VALLEY OAK              | 26                  | 21              |                     |                    | NO     |
| 908        | VALLEY OAK              | 11                  | 15              |                     |                    | NO     |
| 909        | VALLEY OAK              | 29                  | 19              |                     |                    | NO     |
| 910        | BLUE OAK                | 15                  | 10              |                     |                    | NO     |
| 911        | BLUE OAK                | 10                  | 9               |                     |                    | NO     |
| 912        | BLUE OAK                | 6                   | 10              |                     |                    | NO     |
| 913        | BLUE OAK                | 16                  | 11              |                     |                    | NO     |
| 914        | VALLEY OAK              | 12                  | 15              |                     |                    | NO     |
| 915        | VALLEY OAK              | 10                  | 9               |                     |                    | NO     |
| 916        | VALLEY OAK              | 12                  | 15              |                     |                    | NO     |
| 917        | VALLEY OAK              | 17                  | 21              |                     |                    | NO     |
| 918        | BLUE OAK                | 8                   | 10              |                     |                    | NO     |
| 919        | VALLEY OAK              | 13                  | 19              |                     |                    | NO     |
| 920        | VALLEY OAK              | 24                  | 21              |                     |                    | NO     |
| 921        | INTERIOR LIVE OAK       | 14                  | 17              |                     |                    | NO     |
| 922        | VALLEY OAK              | 16                  | 18              |                     |                    | NO     |
| 923        | VALLEY OAK              | 24                  | 17              |                     |                    | NO     |
| 924        | VALLEY OAK              | 19                  | 20              |                     |                    | NO     |
| 925        | BLUE OAK                | 12                  | 10              |                     |                    | NO     |
| 926        | BLUE OAK                | 14                  | 15              |                     |                    | NO     |
| 927        | BLUE OAK                | 15                  | 21              |                     |                    | NO     |
| 928        | VALLEY OAK              | 13                  | 14              |                     |                    | NO     |
| 929        | VALLEY OAK              | 13                  | 16              |                     |                    | NO     |
| 930        | VALLEY OAK              | 15                  | 22              |                     |                    | NO     |
| 931        | VALLEY OAK              | 9                   | 12              |                     |                    | NO     |
| 932        | PEAR TREE               | 12                  | 12              |                     |                    | YES    |
| 933        | VALLEY OAK              | 11                  | 16              |                     |                    | YES    |
| 934        | VALLEY OAK              | 8                   | 14              |                     |                    | YES    |
| 935        | VALLEY OAK              | 7                   | 10              |                     |                    | YES    |
| 936        | VALLEY OAK              | 9                   | 15              |                     |                    | YES    |
| 937        | BLUE OAK                | 14                  | 14              |                     |                    | NO     |
| 938        | VALLEY OAK              | 8                   | 13              |                     |                    | NO     |
| 939        | VALLEY OAK              | 9                   | 12              |                     |                    | NO     |
| 940        | VALLEY OAK              | 13                  | 18              |                     |                    | NO     |
| 941        | INTERIOR LIVE OAK       | 6                   | 16              |                     |                    | NO     |
| 942        | PEAR TREE               | 19                  | 17              |                     |                    | NO     |
| 943        | VALLEY OAK              | 7                   | 13              |                     |                    | NO     |
| 944        | CALIFORNIA BLACK WALNUT | 26                  | 22              |                     |                    | NO     |
| 945        | VALLEY OAK              | 14                  | 16              |                     |                    | NO     |
| 946        | VALLEY OAK              | 7                   | 12              |                     |                    | NO     |
| 947        | VALLEY OAK              | 28                  | 22              |                     |                    | NO     |
| 948        | VALLEY OAK              | 10                  | 9               |                     |                    | NO     |
| 949        | VALLEY OAK              | 20                  | 14              |                     |                    | NO     |

EXHIBIT  
NG OAKS  
N CALIFORNIA  
NGLE FAMILY LOTS

SECTION 16, T 12N, R 6E, M.D.B. & M.  
OF PLACER, CALIFORNIA



VICINITY MAP



SCALE OF FEET 1" = 40'

SUTTERBROWN, INC.  
LAND ENGINEERING AND PLANNING  
775 SUNRISE AVENUE, SUITE 170  
ROSEVILLE, CA 95661  
PHONE: 916.781.0001  
FAX: 916.781.0151

TREE REMOVAL TOTALS:

| SPECIES             | TREES | TRUNK DIA. |
|---------------------|-------|------------|
| BLUE OAK =          | 16    | 310        |
| VALLEY OAK =        | 57    | 912 in.    |
| LIVE OAK =          | 2     | 20 in.     |
| PEAR TREE =         | 2     | 31 in.     |
| CAL. BLACK WALNUT = | 1     | 26 in.     |
| TOTAL=              | 78    | 1,299 in.  |

| SPECIES             | TRUNK DIA.<br>(INCHES) | DRIFLINE<br>(FEET) | RECOMMENDED<br>REMOVAL | PRECAUTIONARY<br>TREE | REMOVE |
|---------------------|------------------------|--------------------|------------------------|-----------------------|--------|
| VALLEY OAK          | 14                     | 20                 |                        |                       | NO     |
| VALLEY OAK          | 18                     | 11                 |                        |                       | NO     |
| VALLEY OAK          | 12                     | 16                 |                        |                       | NO     |
| VALLEY OAK          | 25                     | 25                 |                        | X                     | NO     |
| VALLEY OAK          | 29                     | 23                 |                        | X                     | YES    |
| VALLEY OAK          | 12                     | 13                 |                        |                       | YES    |
| VALLEY OAK          | 8                      | 11                 |                        |                       | YES    |
| VALLEY OAK          | 26                     | 21                 |                        | X                     | YES    |
| VALLEY OAK          | 11                     | 15                 |                        |                       | YES    |
| VALLEY OAK          | 19                     | 19                 |                        | X                     | YES    |
| BLUE OAK            | 15                     | 10                 |                        |                       | YES    |
| BLUE OAK            | 10                     | 9                  |                        |                       | YES    |
| BLUE OAK            | 6                      | 10                 |                        |                       | YES    |
| BLUE OAK            | 16                     | 11                 |                        | X                     | YES    |
| VALLEY OAK          | 12                     | 15                 |                        |                       | YES    |
| VALLEY OAK          | 10                     | 8                  |                        |                       | YES    |
| VALLEY OAK          | 10                     | 12                 |                        |                       | YES    |
| VALLEY OAK          | 17                     | 21                 |                        |                       | YES    |
| BLUE OAK            | 8                      | 10                 |                        |                       | YES    |
| VALLEY OAK          | 13                     | 19                 |                        |                       | YES    |
| VALLEY OAK          | 24                     | 21                 |                        |                       | YES    |
| INTERIOR LIVE OAK   | 14                     | 17                 |                        |                       | YES    |
| VALLEY OAK          | 16                     | 18                 |                        |                       | NO     |
| VALLEY OAK          | 12                     | 17                 |                        |                       | NO     |
| VALLEY OAK          | 19                     | 20                 |                        |                       | YES    |
| BLUE OAK            | 12                     | 18                 |                        |                       | NO     |
| BLUE OAK            | 14                     | 15                 |                        |                       | YES    |
| BLUE OAK            | 15                     | 21                 |                        |                       | YES    |
| VALLEY OAK          | 13                     | 14                 |                        |                       | YES    |
| VALLEY OAK          | 13                     | 16                 |                        |                       | YES    |
| VALLEY OAK          | 15                     | 23                 |                        |                       | YES    |
| VALLEY OAK          | 9                      | 12                 |                        |                       | YES    |
| PEAR TREE           | 12                     | 16                 |                        |                       | YES    |
| VALLEY OAK          | 11                     | 16                 |                        |                       | YES    |
| VALLEY OAK          | 8                      | 14                 |                        |                       | YES    |
| VALLEY OAK          | 7                      | 10                 |                        |                       | YES    |
| VALLEY OAK          | 9                      | 15                 |                        |                       | YES    |
| VALLEY OAK          | 15                     | 14                 |                        |                       | YES    |
| VALLEY OAK          | 8                      | 13                 |                        |                       | YES    |
| VALLEY OAK          | 9                      | 12                 |                        |                       | YES    |
| VALLEY OAK          | 13                     | 18                 |                        |                       | YES    |
| INTERIOR LIVE OAK   | 6                      | 16                 |                        |                       | YES    |
| PEAR TREE           | 19                     | 17                 |                        |                       | YES    |
| VALLEY OAK          | 7                      | 13                 |                        |                       | YES    |
| ORANGE BLACK WALNUT | 26                     | 22                 |                        |                       | YES    |
| VALLEY OAK          | 14                     | 16                 |                        |                       | YES    |
| VALLEY OAK          | 7                      | 12                 |                        |                       | YES    |
| VALLEY OAK          | 28                     | 22                 |                        | X                     | YES    |
| VALLEY OAK          | 9                      | 14                 |                        |                       | YES    |
| VALLEY OAK          | 20                     | 14                 |                        | X                     | YES    |

| TAG NUMBER | SPECIES    | TRUNK DIA.<br>(INCHES) | DRIFLINE<br>(FEET) | RECOMMENDED<br>REMOVAL | PRECAUTIONARY<br>TREE | REMOVE |
|------------|------------|------------------------|--------------------|------------------------|-----------------------|--------|
| 950        | VALLEY OAK | 23                     | 19                 |                        |                       | YES    |
| 951        | BLUE OAK   | 11                     | 19                 |                        |                       | NO     |
| 952        | BLUE OAK   | 9                      | 11                 |                        |                       | NO     |
| 953        | BLUE OAK   | 9                      | 12                 |                        |                       | YES    |
| 954        | VALLEY OAK | 15                     | 19                 |                        |                       | YES    |
| 955        | VALLEY OAK | 17                     | 21                 |                        |                       | YES    |
| 956        | VALLEY OAK | 37                     | 26                 |                        | X                     | YES    |
| 957        | VALLEY OAK | 39                     | 27                 |                        |                       | YES    |
| 958        | VALLEY OAK | 22                     | 23                 |                        | X                     | YES    |
| 959        | VALLEY OAK | 16                     | 27                 |                        |                       | YES    |
| 960        | VALLEY OAK | 20                     | 30                 |                        |                       | YES    |
| 961        | VALLEY OAK | 16                     | 29                 |                        |                       | YES    |
| 962        | VALLEY OAK | 13                     | 17                 |                        |                       | YES    |
| 963        | VALLEY OAK | 13                     | 21                 |                        | X                     | YES    |
| 964        | VALLEY OAK | 16                     | 22                 |                        | X                     | YES    |
| 965        | VALLEY OAK | 19                     | 17                 |                        |                       | YES    |
| 966        | VALLEY OAK | 12                     | 17                 |                        |                       | YES    |
| 967        | VALLEY OAK | 11                     | 15                 |                        |                       | YES    |
| 968        | VALLEY OAK | 10                     | 16                 |                        |                       | YES    |
| 969        | VALLEY OAK | 14                     | 19                 |                        |                       | YES    |
| 970        | VALLEY OAK | 25                     | 32                 |                        |                       | YES    |
| 971        | VALLEY OAK | 43                     | 35                 | X                      |                       | NO     |
| 972        | VALLEY OAK | 32                     | 41                 |                        | X                     | NO     |
| 973        | VALLEY OAK | 31                     | 42                 | X                      |                       | NO     |
| 974        | BLUE OAK   | 50                     | 46                 |                        | X                     | NO     |
| 975        | BLUE OAK   | 24                     | 29                 |                        |                       | NO     |
| 976        | BLUE OAK   | 30                     | 38                 |                        |                       | NO     |
| 977        | BLUE OAK   | 37                     | 43                 |                        | X                     | NO     |
| 978        | BLUE OAK   | 22                     | 28                 |                        |                       | NO     |
| 979        | BLUE OAK   | 35                     | 43                 |                        | X                     | NO     |
| 980        | VALLEY OAK | 15                     | 20                 |                        |                       | YES    |
| 981        | VALLEY OAK | 11                     | 17                 |                        | X                     | YES    |
| 982        | VALLEY OAK | 8                      | 15                 |                        |                       | YES    |
| 983        | VALLEY OAK | 21                     | 19                 |                        | X                     | YES    |
| 984        | VALLEY OAK | 13                     | 14                 |                        | X                     | NO     |
| 985        | VALLEY OAK | 16                     | 18                 |                        |                       | YES    |
| 986        | BLUE OAK   | 36                     | 38                 | X                      |                       | NO     |
| 987        | VALLEY OAK | 10                     | 10                 |                        |                       | NO     |
| 988        | BLUE OAK   | 6                      | 8                  |                        |                       | YES    |
| 989        | VALLEY OAK | 6                      | 9                  |                        |                       | YES    |